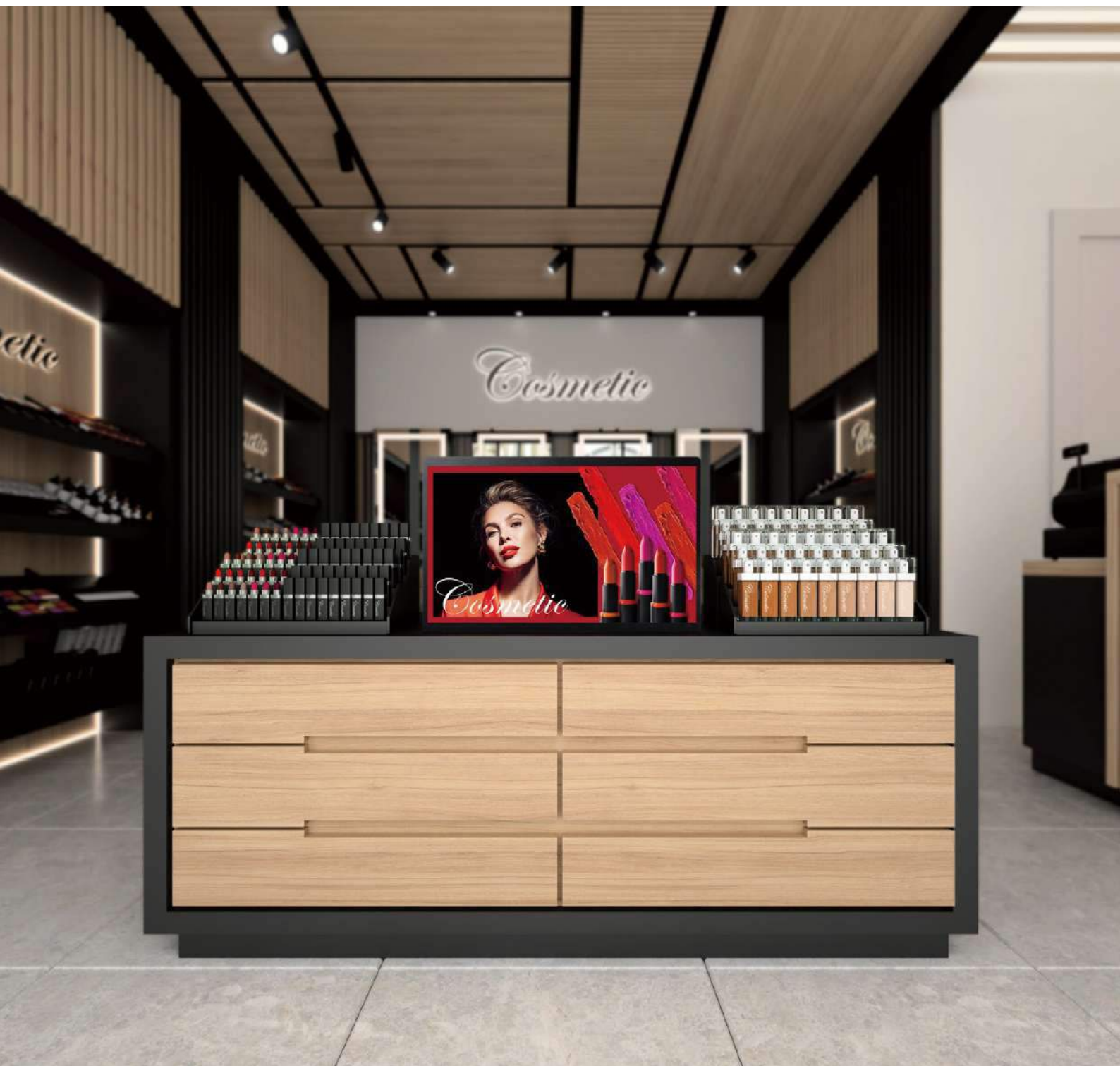


# Samsung Smart Signage Small Display

QB24R-B / QB24R-TB

Enhanced communication in a compact display



## Industry trend

With an ever-growing need to create differentiated brick-and-mortar locations, providing a unique in-store experience is critically important for elevating a brand and driving sales. Therefore, businesses are finding new and effective ways to engage customers by making the most of every customer touch point. Small-sized displays are being adapted as common tools in various environments. More personalized, intimate content can reach the right audience at optimal points in time, increasing engagement and sales opportunities. Efficient content management and reliable performance ensure businesses can operate the displays without any hassle.

## Introducing Samsung Small Displays

Samsung is introducing the two latest versatile, small-sized displays, the QB24R-B and touch-enabled QB24R-TB. Designed for professional use, Samsung's QB24R-B and QB24R-TB deliver clear content using the embedded MagicINFO S media player, supported by reliable 16/7 operation and industry standard certification to ensure safe operation and simple, reliable performance.



### QB24R-B : Small Display

The QB24R-B is a small display that packs a heavy punch with FHD resolution delivering vivid, eye-catching text and content. Ideal for highlighting targeted promotions to drive purchase of key items on store shelves or nearby walls. Crisp visuals and powerful content playback help drive greater engagement and immediate customer interaction at the point of purchase. The display's compact design and clear visuals also make it an excellent choice for posting schedules for meeting rooms, classrooms.



### QB24R-TB : Touch Display

With integrated capacitive touch functionality, the QB24R-TB provides a user-friendly experience. Its 10-point multi-touch and fast response time powers an intuitive interface that allows for customer-driven search and action. QB24R-TB is optimized for any interaction in locations such as health-care facilities, check-in at the gym, an automotive showroom, as well as any retail or restaurant environment where businesses would want to offer a personalized service while also acquiring customer data.



# Key features



16/7



Non-glare



## Crisp and visible content

Samsung's QB24R-B and QB24R-TB are enhanced by a non-glare panel which always delivers clear images and text regardless of any ambient light. This essential feature is supported by reliable 16/7 operation, suitable for professional use.



MagicINFO S

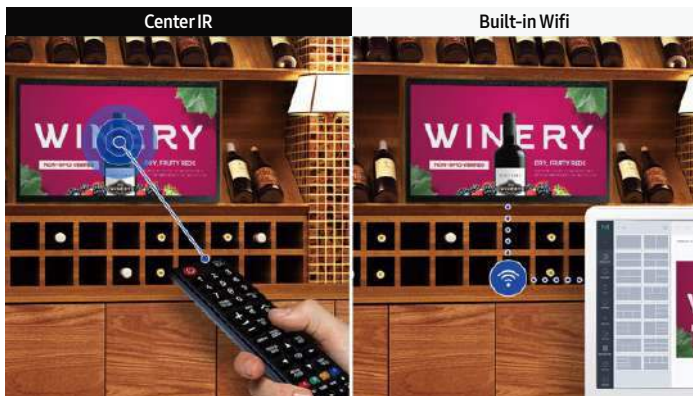


Embedded media player



## Powerful content playback

With an embedded MagicINFO S player, backed by TIZEN, the QB24R-B and QB24R-TB allow efficient and seamless playback without any external media player. SSSP also allows easy content development through reinforced compatibility with multiple web formats.



## Convenient, clean display control

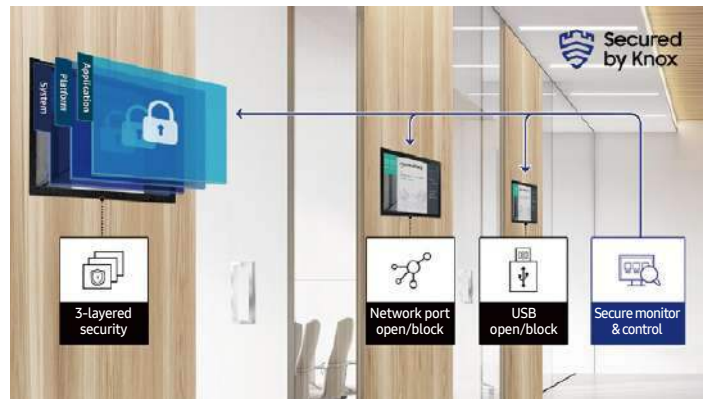
With center IR, each display receives IR signals direct to the panel, allowing easy and convenient remote control. When mounted, the display doesn't require an IR receiver cabling extension. Built-in Wi-Fi allows wireless remote management for both content and display.



## Slim design

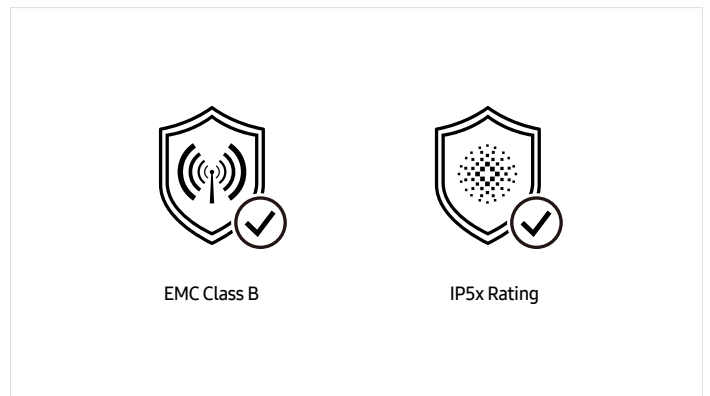
The compact and slim design of the display allows for efficient space utilization, even in compact locations. A sleek rear design makes the display optimal for wall mounting while the connectivity, content play and device controls are easy to operate.

\*Depth of QB24R-TB is 34.6 mm



## Comprehensive security setup

The powerful Knox security system provides rigid, three-layer security, offering airtight protection at the application, platform and system level, while restricting access to content and hardware. In addition, remote control of the network and USB ports prevents any unauthorized access.



## Safe operation, reliable performance

The QB24R-B and QB24R-TB display are electromagnetic compatibility (EMC) class B compliant, meeting strict safety and reliability standards for operation. Additionally, IP5x rating ensures durable performance even in dusty environments.

# Specifications

| Model             |                                 |                                 | QB24R-B   | QB24R-TB  |   |
|-------------------|---------------------------------|---------------------------------|---|---|---|
| Panel             | Diagonal Size                   | Class                           | 24  | 24  |   |
|                   |                                 | Measured                        | 23.8  | 23.8  |   |
|                   | Type                            | ADS                             | ADS   |   |   |
|                   | Resolution                      | FHD (1920 x 1080)               | FHD (1920 x 1080)   |   |   |
|                   | Pixel Pitch (mm)                | 0.2745 x 0.2745                 | 0.2745 x 0.2745   |   |   |
|                   | Active Display Area             | 527.04 (H) x 296.46 (V)         | 527.04 (H) x 296.46 (V)   |   |   |
|                   | Brightness(Typ.)                | 250                             | 250 (w/o Glass)   |   |   |
|                   | Contrast Ratio (Typ.)           | 1000:1                          | 1000:1 (w/o Glass)  |   |   |
|                   | Viewing Angle(H/V)              | 178/178                         | 178/178   |   |   |
|                   | Response Time (G to G)          | 14ms (Typ.)                     | 14ms (Typ.)   |   |   |
|                   | Display Colors                  | 16.7 M (real 6bit, dither 8bit) | 16.7 M (real 6bit, dither 8bit)   |   |   |
|                   | Color Gamut                     | 72%                             | 72%   |   |   |
|                   | Operation Hour                  | 16/7                            | 16/7  |   |   |
|                   | Haze                            | 25%                             | 10%   |   |   |
| Display           | Dynamic C/R                     | MEGA                            | MEGA  |   |   |
|                   | H-Scanning Frequency            | 56 ~ 84.5kHz                    | 56 ~ 84.5kHz  |   |   |
|                   | V-Scanning Frequency            | 48 ~ 75Hz                       | 48 ~ 75Hz   |   |   |
|                   | Maximum Pixel Frequency         | 594MHz                          | 594MHz  |   |   |
| Sound             | Speaker Type                    | Built in Speaker (5W)           | Built in Speaker (5W)   |   |   |
| Connectivity      | INPUT                           | RGB                             | N/A   | N/A   |   |
|                   |                                 | VIDEO                           | HDMI 1.4 (1)  | HDMI 1.4 (1)  |   |
|                   |                                 | HDCP                            | HDCP 2.2  | HDCP 2.2  |   |
|                   |                                 | AUDIO                           | N/A   | N/A   |   |
|                   |                                 | USB                             | USB 2.0 x1  | USB 2.0 x1  |   |
|                   | OUTPUT                          | RGB                             | N/A   | N/A   |   |
|                   |                                 | VIDEO                           | N/A   | N/A   |   |
|                   |                                 | AUDIO                           | Stereo Mini Jack  | Stereo Mini Jack  |   |
|                   |                                 | Power Out                       | N/A   | Power Out - N/A / Touch Out - x1  |   |
|                   |                                 | USB                             | N/A   | N/A   |   |
|                   | EXTERNAL CONTROL                |                                 | RS232C (in) thru stereo jack, RJ45  | RS232C (in) thru stereo jack, RJ45  |   |
|                   | EXTERNAL SENSOR                 |                                 | N/A   | N/A   |   |
|                   | Tuner                           |                                 | N/A   | N/A   |   |
|                   | Power                           | Type                            |   | Internal  | Internal  |
| Power Supply      |                                 |                                 | AC100 - 240 V, 50/60 Hz   | AC100 - 240 V, 50/60 Hz   |   |
| Power Consumption |                                 | Max[W/h]                        |   | 38.5  | 38.5  |
|                   |                                 | Typical[W/h]                    |   | 25  | 28  |
|                   |                                 | Rating[W/h]                     |   | 35  | 35  |
|                   |                                 | BTU(Max)                        |   | 131.3   | 131.3   |
|                   |                                 | Sleep mode                      |   | 0.5   | 0.5   |
| Off mode          |                                 | N/A                             | N/A   |   |   |
| Mechanical Spec   | Dimension(mm)                   | Set                             | 547.9 x 334.4 x 31.8  | 547.9 x 334.4 x 34.6  |   |
|                   |                                 | Package                         | 620 x 419 x 122   | 620 x 419 x 122   |   |
|                   | Weight (kg)                     | Set                             | 3.0   | 4.0   |   |
|                   |                                 | Package                         | 4.1   | 5.2   |   |
|                   | VESA Mount                      |                                 | 100 x 100   | 100 x 100   |   |
|                   | Protection Glass                |                                 | N/A   | 2.0T  |   |
| Stand Type        |                                 | N/A                             | N/A   |   |   |
| Operation         | Bezel Width (Top/Side/Bot) (mm) |                                 | 17.9mm (U/B), 9.4mm (L/R)   | 17.9mm (U/B), 9.4mm (L/R)   |   |
|                   | Operating Temperature           |                                 | 0°C- 40°C   | 0°C- 40°C   |   |
| Feature           | Humidity                        |                                 | 10 ~ 80%  | 10 ~ 80%  |   |
|                   | Key                             |                                 | Small Signage Display<br>Slim & Light Signage with<br>Built-in MagicInfo S6, SSSP 6.0   | Small Touch Signage Display<br>Slim & Light Signage with<br>Built-in MagicInfo S6, SSSP 6.0                                   |   |
|                   |                                 | Special                         | H/W   | Temperature Sensor, Pivot Display, Clock Battery (168hrs Clock Keeping),<br>Built in Speaker (5W1ch), IP5x Rating, Wi-Fi      | Temperature Sensor, Pivot Display, Clock Battery (168hrs Clock Keeping),<br>Built in Speaker (5W1ch), IP5x Rating, Wi-Fi,<br>10 Point Touch (Max) |
|                   | Feature                         | S/W                             |   | Auto Source Switching & Recovery,<br>LFD Home UI, Button Lock, Hot key option, Plug&Play (Initial Setting)                    | Auto Source Switching & Recovery,<br>LFD Home UI, Button Lock, Hot key option, Plug&Play (Initial Setting)  |
|                   |                                 |                                 | Processor   | Cortex A72 1.7GHz Quad-Core CPU   | Cortex A72 1.7GHz Quad-Core CPU   |
|                   |                                 | On-Chip Cache Memory            | L1 Instruction Cache : 48KB<br>L1 Data Cache : 32KB<br>L2 Cache : 2MB   | L1 Instruction Cache : 48KB<br>L1 Data Cache : 32KB<br>L2 Cache : 2MB   |   |
|                   |                                 | Clock Speed                     | 1.7GHz  | 1.7GHz  |   |
|                   |                                 | Main Memory Interface           | 2.5GB<br>LPDDR4 1.5GHz 64bit  | 2.5GB<br>LPDDR4 1.5GHz 64bit  |   |
|                   |                                 | Internal Player (Embedded H/W)  | Graphics  | Graphic resolution : 1920 x 1080<br>Output resolution : 1920 x 1080 (Scale up from graphic processing result.)                | Graphic resolution : 1920 x 1080<br>Output resolution : 1920 x 1080 (Scale up from graphic processing result.)                                    |
|                   |                                 |                                 | Storage (FDM)   | 8GB<br>(3.88GB Occupied by O/S, 4.12GB Available)   | 8GB<br>(3.88GB Occupied by O/S, 4.12GB Available)   |
|                   |                                 | Multimedia                      | *Video Decoder : MPEG-1/2/4, H.263, H.264/AVC, UHD H.264/AVC, VC-1, HEVC, JPEG, PNG, VP8, VP9 *Audio Decoder : AC3 (DD), MPEG | *Video Decoder : MPEG-1/2/4, H.263, H.264/AVC, UHD H.264/AVC, VC-1, HEVC, JPEG, PNG, VP8, VP9 *Audio Decoder : AC3 (DD), MPEG |   |
|                   |                                 | IO Ports                        | USB 2.0   | USB 2.0   |   |
|                   |                                 | Operating System                | Tizen 4.0 (VDLinux)   | Tizen 4.0 (VDLinux)   |   |
|                   | Certification                   | Safety                          |   | 60950-1   | 60950-1   |
| EMC               |                                 |                                 | Class B   | Class B   |   |
| Environment       |                                 |                                 | ENERGY STAR 8.0, Epeat  | ENERGY STAR 8.0, Epeat  |   |
| Security          |                                 |                                 | 802.1x (WPA2 Enterprise)<br>: EAP-TLS, EAP-TTLS, EAP-PEAP   | 802.1x (WPA2 Enterprise)<br>: EAP-TLS, EAP-TTLS, EAP-PEAP   |   |
| Accessories       | Included                        |                                 | Quick Setup Guide, Warranty Card,<br>Power Cord, Remote Controller, Batteries   | Quick Setup Guide, Warranty Card,<br>Power Cord, Remote Controller, Batteries, USB Cable                                      |   |
|                   | Optional                        | Stand                           | N/A   | N/A   |   |
|                   |                                 | Mount                           | N/A   | N/A   |   |
|                   |                                 | Specialty                       | N/A   | N/A   |   |
|                   |                                 | Media Player                    | N/A   | N/A   |   |

## About Samsung Electronics Co., Ltd.

Samsung Electronics Co., Ltd. inspires the world and shapes the future with transformative ideas and technologies. The company is redefining the worlds of TVs, smartphones, wearable devices, tablets, cameras, digital appliances, medical equipment, network systems, and semiconductor and LED solutions. For the latest news, please visit the Samsung Newsroom at [news.samsung.com](https://news.samsung.com).

## Smart Signage

For more information about Samsung Smart Signage QB24R-B, QB24R-TB Displays, visit [www.samsung.com/business](https://www.samsung.com/business) or [www.samsung.com/displaysolutions](https://www.samsung.com/displaysolutions)

Copyright © 2022 Samsung Electronics Co. Ltd. All rights reserved. Samsung is a registered trademark of Samsung Electronics Co. Ltd. Specifications and designs are subject to change without notice. Non-metric weights and measurements are approximate. All data were deemed correct at time of creation. Samsung is not liable for errors or omissions. All brand, product, service names and logos are trademarks and/or registered trademarks of their respective owners and are hereby recognized and acknowledged.

Samsung Electronics Co., Ltd.  
416, Maetan 3-dong, Yeongtong-gu, Suwon-si, Gyeonggi-do 443-772, Korea