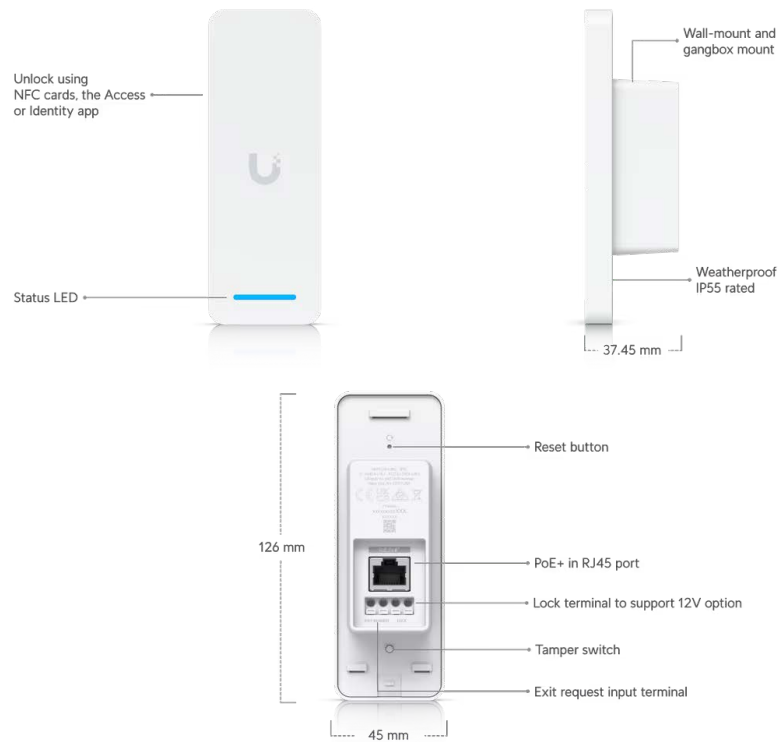




Access Ultra

UA-Ultra



Mechanical

Dimensions	126 x 45 x 37.45 mm (4.9 x 1.8 x 4.5")
Weight	140 g (4.9 oz)
Enclosure material	Polycarbonate, aluminum alloy
Mounting	Wall mount, gang box mount
Weatherproofing	IP55

Hardware

Networking interface	10/100 MbE RJ45 port
Connectivity	Ethernet BLE 4.2
Digital input	(1) Exit request
Lock terminals	(1) 12V, 1A
Power method	PoE+
Max. power consumption	18W
ESD/EMP protection	Air: ± 8 kV, contact: ± 4 kV

LEDs	<p>Steady white: Pending adoption</p> <p>Steady blue: Adopted</p> <p>Alternating white/blue: Firmware updating</p> <p>Strobing red: Emergency lockdown</p> <p>Steady green: Emergency evacuation</p> <p>(2) Rapid flashing blue: NFC credential authenticated</p> <p>(2) Rapid flashing red: NFC credential authentication failed Breathing blue: Ready to register NFC cards</p>
Button	(1) Factory reset
Tamper switch	Yes
Speaker	Buzzer
NFC frequency	13.56 Mhz
NFC read range	< 50 mm
NFC standards	ISO 14443A, 14443B, 15693
NFC technology	<p>NFC Tag 1,2,3,4,5</p> <p>MIFARE Classic</p> <p>MIFARE Plus</p> <p>Mifare Ultralight</p> <p>MIFARE DESFire</p>
Ambient operating temperature	-30 to 40° C (-22 to 104° F)
Ambient operating humidity	5 to 90% noncondensing
Certifications	CE, FCC, IC